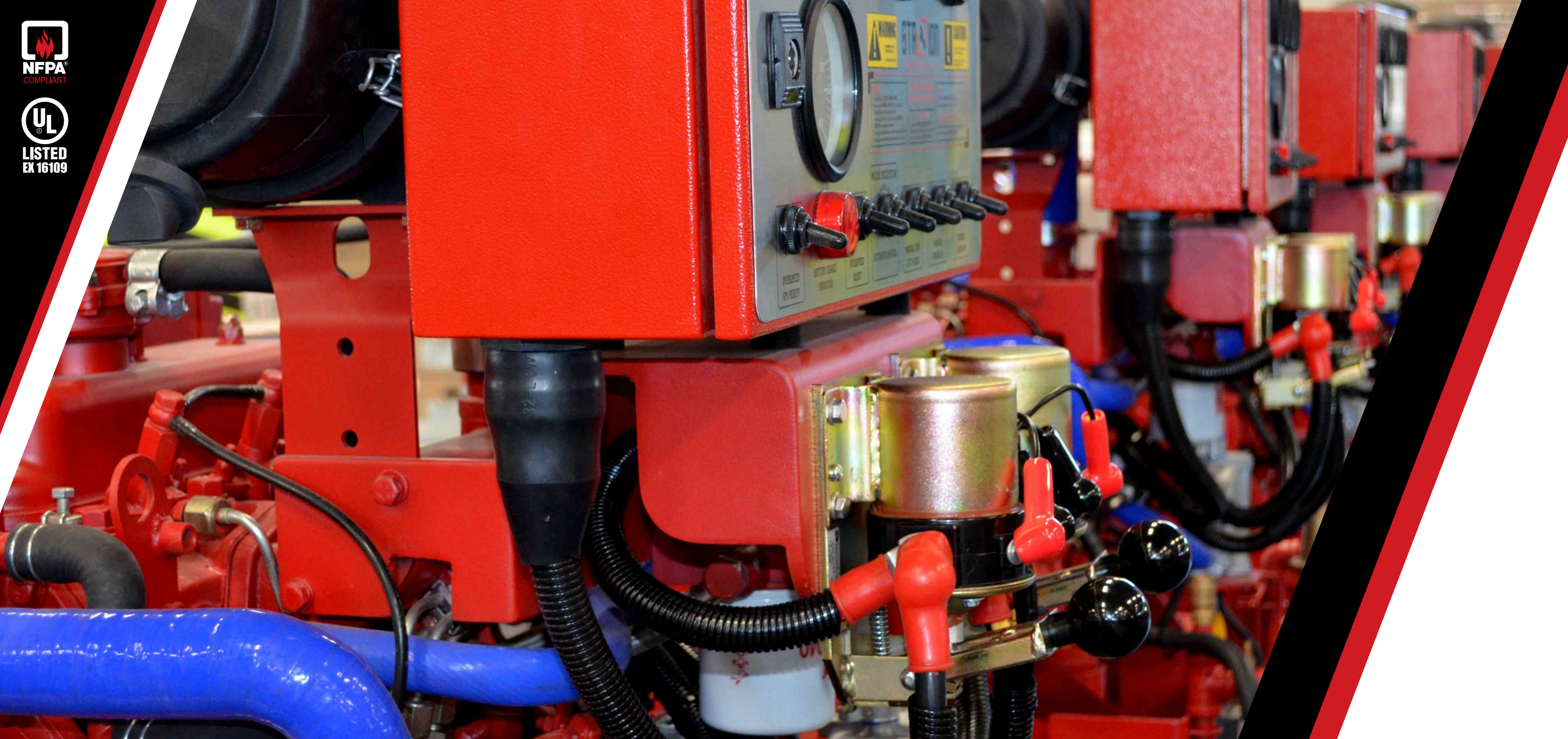


www.stallion-engine.com



DIESEL ENGINE DRIVERS





BLACK STALLION

BLACK STALLION stands for quality, efficiency, performance and delivery.

BLACK STALLION is your confidence for Internal Combustion Engines for Driving Stationery Fire Pumps.

Bringing together a mix of international design expertise with years of engineering experience, extensive research and advanced manufacturing facility, **BLACK STALLION** translated into a range of products that are here to stay.

The knowledge gained by the research and expertise, has resulted in the development of Premium Quality, Cost Efficient, Performance Oriented, High Speed Diesel Engines, with a wide range of Power.

BLACK STALLION is a symbol of trust for all fire pump installations. It is manufactured in accordance to NFPA 20 standards, and has passed all tests and criteria of the UL 1247 requirements, in our own UL Approved manufacturing and testing facility.

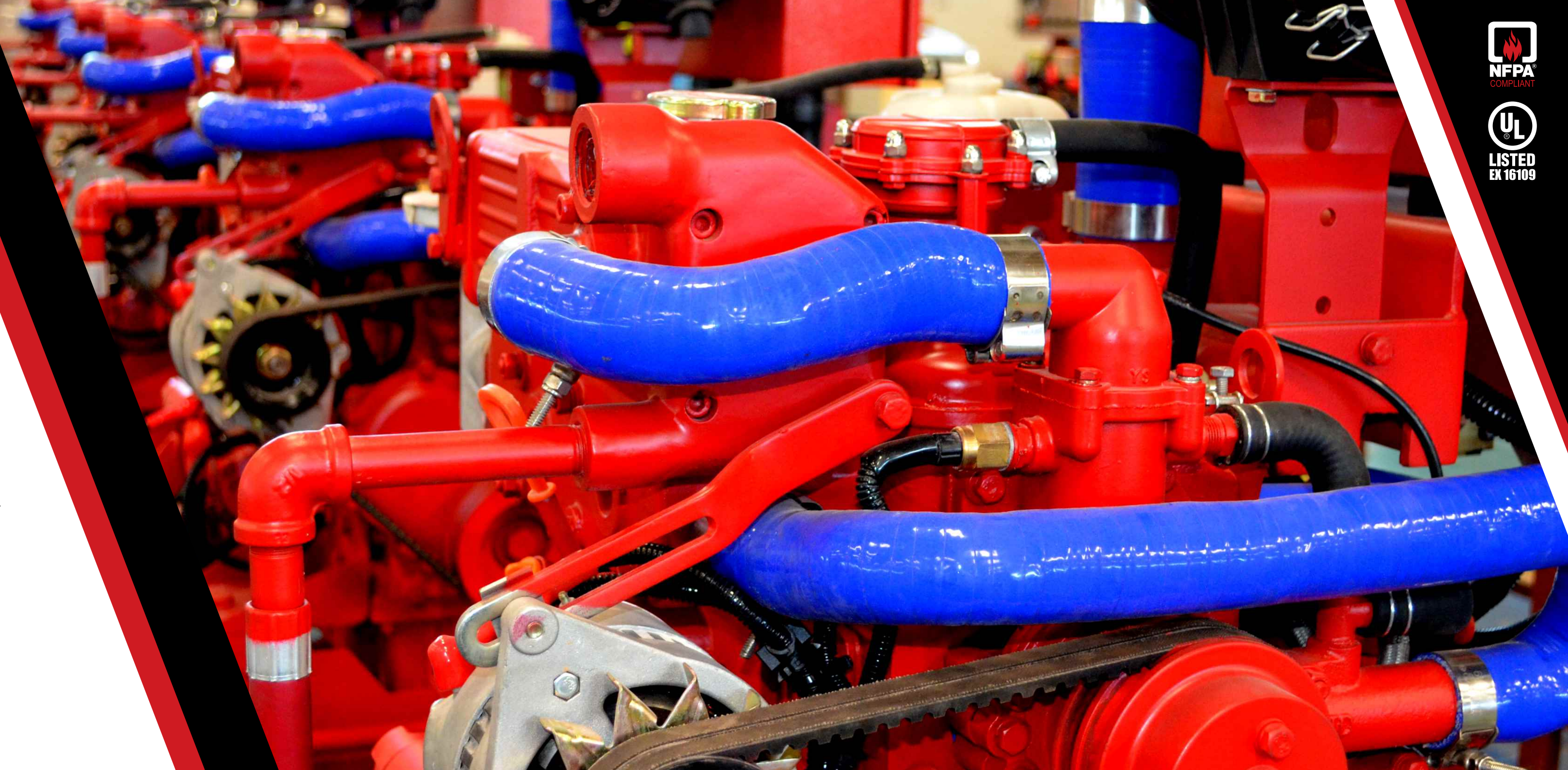
Our Diesel Engine Drivers are suitable and compatible to be coupled with small to big fire pumps with different configurations, due to availability of a wide range of models starting from 15 HP.

The new range of **BLACK STALLION** Diesel engines are a proud addition to SFFECO GLOBAL's line of products.



HIGH PERFORMANCE FEATURES

- 🐎 Disposable Dry Type Air Filter
- 🐎 Steady Output Alternator
- 🐎 RFC Shaft Coupling
- 🐎 Flexible Hose Supply and Return Fuel Connections
- 🐎 Spin-On Type Fuel and Oil Filter
- 🐎 Inline Type, Gear Driven Fuel Injection System
- 🐎 High Capacity Automatic Engine Water Heater
- 🐎 Water to Water, Shell to Tube Type Heat Exchanger
- 🐎 Instrumentation Panel Complete with Analog Display, Manual Start Control
- 🐎 Electronic Over Speed Control with Reset and Test Functions
- 🐎 Energized to Stop Type Solenoid
- 🐎 High Torque Starters
- 🐎 Tamper Proof Adjustable Speed Control
- 🐎 Water Cooling Loop



FC 3015-UL

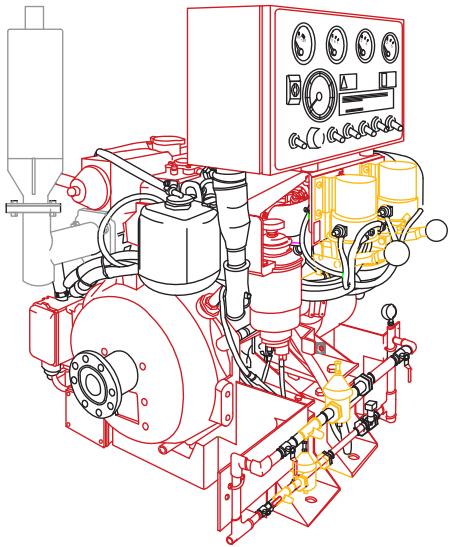
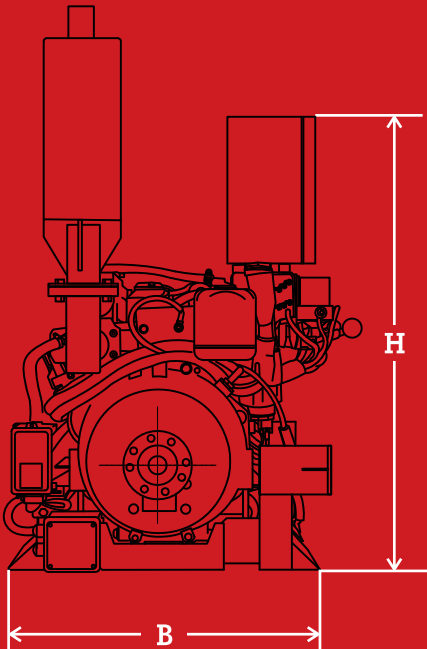
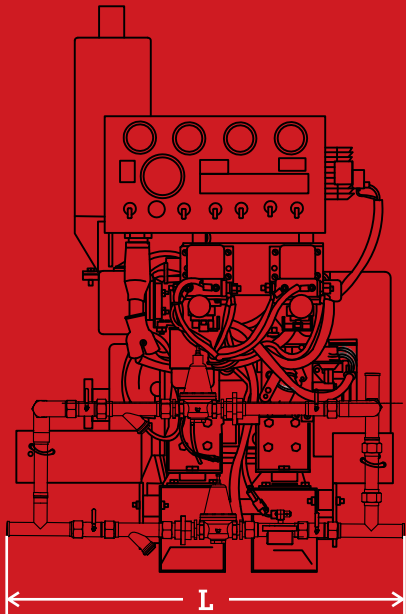
Heat Exchanger Cooled, Naturally Aspirated
1.12 Liter, 3 Cylinder Engine
15 HP Diesel Engine

RATED POWER	15 HP
Speed	2900
Number of Cylinders	3
Aspiration	Naturally Aspirated
Rotation	Clockwise Rotation
Compression Ratio	22
Displacement	1124 cc
Engine Type	4 Stroke Cycle - Inline Construction
Bore & Stroke	78 mm X 78.4 mm
Fuel Consumption	4.1143 Kg./Hr
Voltage	12 VOLTS
Exhaust Temperature	550°C
Back Pressure	Not more than 15 Kpa
Raw Water Inlet Size	½ inch
Max. Raw Water Pressure	60 psi
Min. Raw Water Flow	3.2 gpm
Water Jacket Heater Size	750 W, 240 VAC

- NOTES**
- Each engine is factory tested to verify power and performance.
 - Engines are to be used for stationary emergency standby fire pump service only. Engines are to be tested in accordance with NFPA 25.
 - Engines are rated at standard SAE conditions of 29.61 in. (752.1 mm) Hg barometer and 77°F (25°C) inlet air temperature [approximates 300 ft (91.4 m) above sea level] by the testing laboratory (see SAE Standard J 1349).
 - A deduction of 3 percent from engine horsepower rating at standard SAE conditions shall be made for diesel engines for each 1000 ft. (305 m) altitude above 300 ft. (91.4 m)
 - A deduction of 1 percent from engine horsepower rating as corrected to standard SAE conditions shall be made for diesel engines for every 10°F (5.6°C) above 77°F (25°C) ambient temperature.

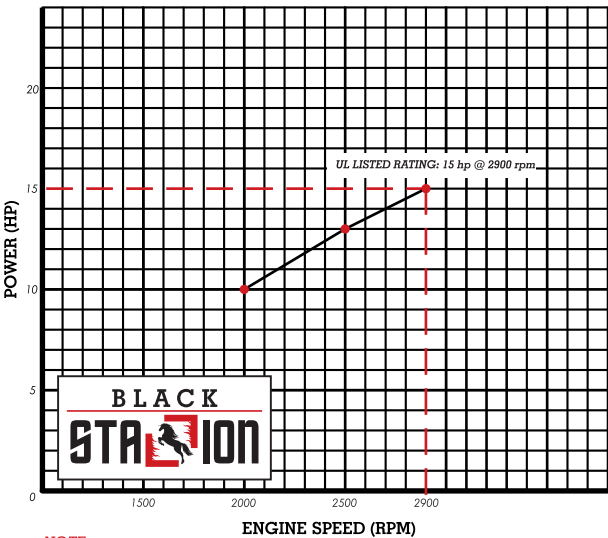


DIMENSIONAL DRAWINGS



DIMENSIONS (L x B x H)
702 mm x 760 mm x 820 mm
WEIGHT:
190 kg (419.9 lbs)

PERFORMANCE CURVE



NOTE:
FOR USE IN FIRE PUMP APPLICATIONS ONLY.

FC 3020-UL

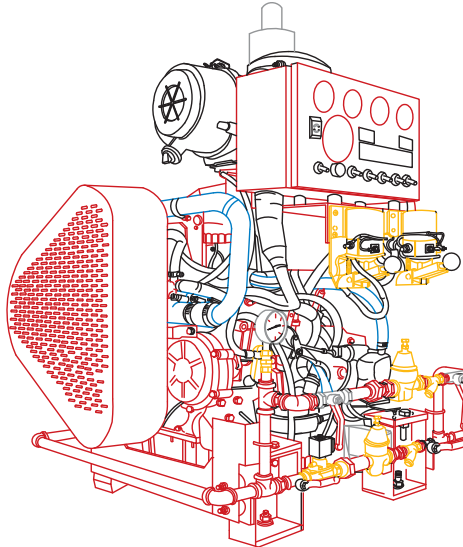
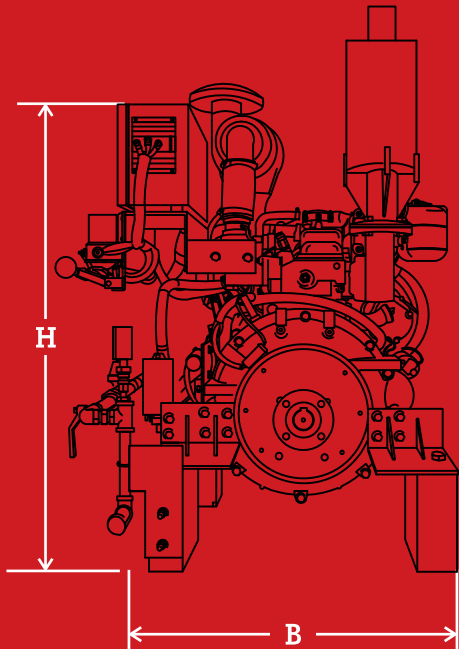
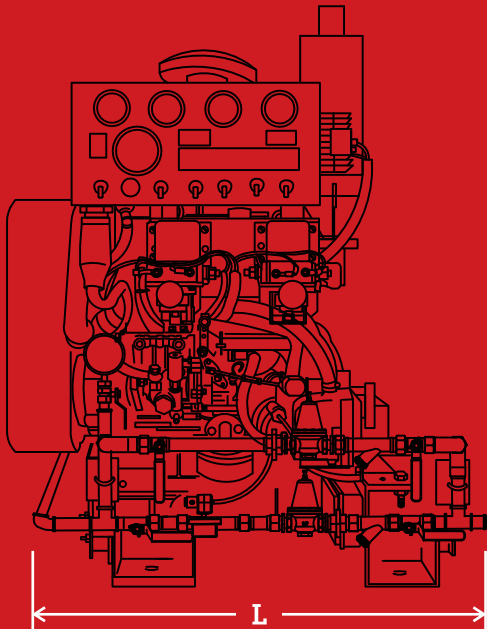
Heat Exchanger Cooled, Naturally Aspirated
1.4 Liter, 3 Cylinder Engine
20 HP Diesel Engine

RATED POWER	20 HP
Speed	2900
Number of Cylinders	3
Aspiration	Naturally Aspirated
Rotation	Clockwise Rotation
Compression Ratio	17:1
Displacement	1357 cc
Engine Type	4 Stroke Cycle - Inline Construction
Bore & Stroke	80 mm X 90 mm
Fuel Consumption	5.4878 Kg./Hr
Voltage	12 VOLTS
Exhaust Temperature	550°C
Back Pressure	Not more than 15 Kpa
Raw Water Inlet Size	½ inch
Max. Raw Water Pressure	60 psi
Min. Raw Water Flow	4.2 gpm
Water Jacket Heater Size	750 W, 240 VAC

- NOTES**
- Each engine is factory tested to verify power and performance.
 - Engines are to be used for stationary emergency standby fire pump service only. Engines are to be tested in accordance with NFPA 25.
 - Engines are rated at standard SAE conditions of 29.61 in. (752.1 mm) Hg barometer and 77°F (25°C) inlet air temperature [approximates 300 ft (91.4 m) above sea level] by the testing laboratory (see SAE Standard J 1349).
 - A deduction of 3 percent from engine horsepower rating at standard SAE conditions shall be made for diesel engines for each 1000 ft. (305 m) altitude above 300 ft. (91.4 m)
 - A deduction of 1 percent from engine horsepower rating as corrected to standard SAE conditions shall be made for diesel engines for every 10°F (5.6°C) above 77°F (25°C) ambient temperature.

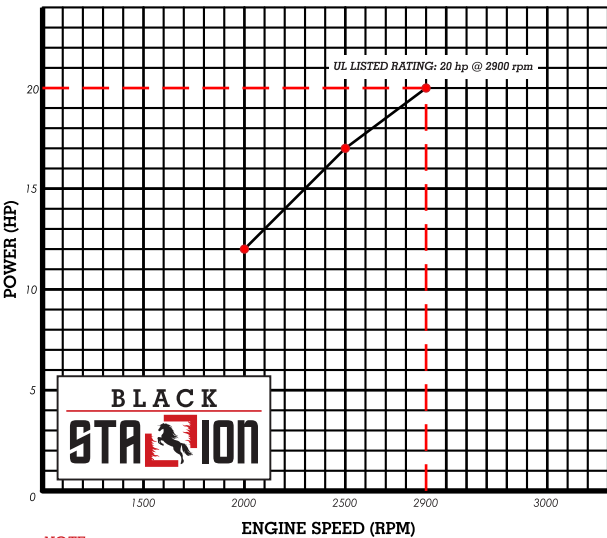


DIMENSIONAL DRAWINGS



DIMENSIONS (L x B x H)
780 mm x 900 mm x 970 mm
WEIGHT:
290 kg (639.34 lbs)

PERFORMANCE CURVE



NOTE:
FOR USE IN FIRE PUMP APPLICATIONS ONLY.

FC 4040-UL

Heat Exchanger Cooled, Naturally Aspirated

2.15 Liter, 4 Cylinder Engine

30 HP Diesel Engine

RATED POWER	30 HP
Speed	2900
Number of Cylinders	4
Aspiration	Naturally Aspirated
Rotation	Clockwise Rotation
Compression Ratio	17:1
Displacement	2156 cc
Engine Type	4 Stroke Cycle - Inline Construction
Bore & Stroke	85 mm X 95 mm
Fuel Consumption	7.4689 Kg./Hr
Voltage	12 VOLTS
Exhaust Temperature	550°C
Back Pressure	Not more than 15 Kpa
Raw Water Inlet Size	½ inch
Max. Raw Water Pressure	60 psi
Min. Raw Water Flow	7.2 gpm
Water Jacket Heater Size	1000 W, 240 VAC

- NOTES
- Each engine is factory tested to verify power and performance.

Engines are to be used for stationary emergency standby fire pump service only. Engines are to be tested in accordance with NFPA 25.

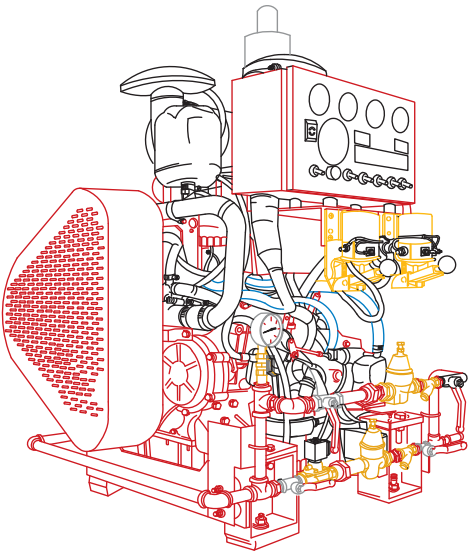
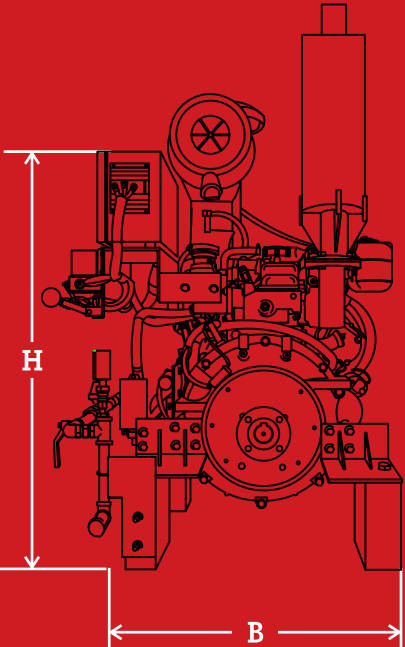
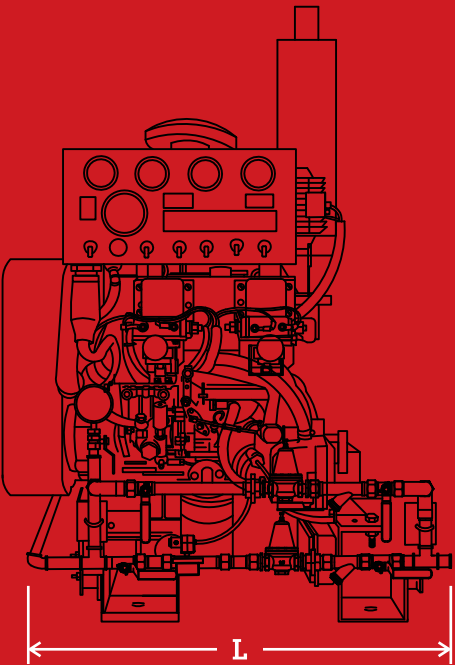
Engines are rated at standard SAE conditions of 29.61 in. (752.1 mm) Hg barometer and 77°F (25°C) inlet air temperature [approximates 300 ft (91.4 m) above sea level] by the testing laboratory (see SAE Standard J 1349).

A deduction of 3 percent from engine horsepower rating at standard SAE conditions shall be made for diesel engines for each 1000 ft. (305 m) altitude above 300 ft. (91.4 m)

A deduction of 1 percent from engine horsepower rating as corrected to standard SAE conditions shall be made for diesel engines for every 10°F (5.6°C) above 77°F (25°C) ambient temperature.



DIMENSIONAL DRAWINGS



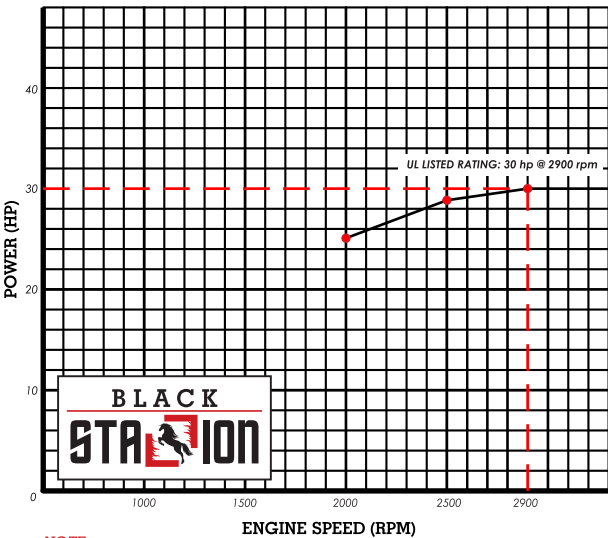
DIMENSIONS (L x B x H)

930 mm x 980 mm x 970 mm

WEIGHT:

320 kg (705.45 lbs)

PERFORMANCE CURVE



NOTE:

FOR USE IN FIRE PUMP APPLICATIONS ONLY.

FC 4060-UL

Heat Exchanger Cooled, Naturally Aspirated

2.54 Liter, 4 Cylinder Engine

57 HP Diesel Engine

RATED POWER	57 HP
Speed	2900
Number of Cylinders	4
Aspiration	Naturally Aspirated
Rotation	Clockwise Rotation
Compression Ratio	17:1
Displacement	2545 cc
Engine Type	4 Stroke Cycle - Inline Construction
Bore & Stroke	90 mm X 100 mm
Fuel Consumption	13.9398 Kg./Hr
Voltage	12 VOLTS
Exhaust Temperature	550°C
Back Pressure	Not more than 15 Kpa
Raw Water Inlet Size	½ inch
Max. Raw Water Pressure	60 psi
Min. Raw Water Flow	12.5 gpm
Water Jacket Heater Size	1500 W, 240 VAC

- NOTES
- Each engine is factory tested to verify power and performance.

Engines are to be used for stationary emergency standby fire pump service only. Engines are to be tested in accordance with NFPA 25.

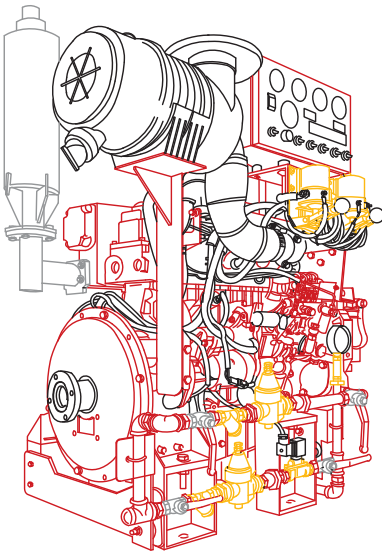
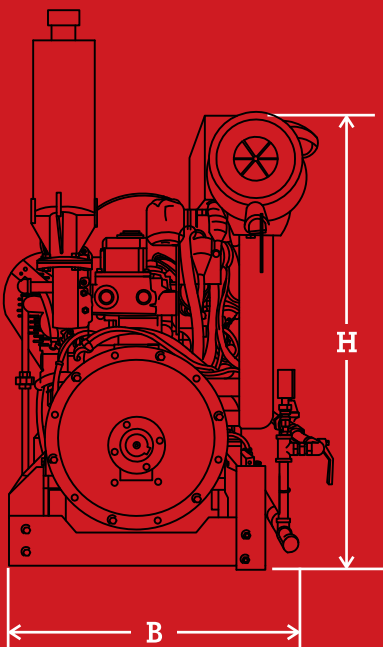
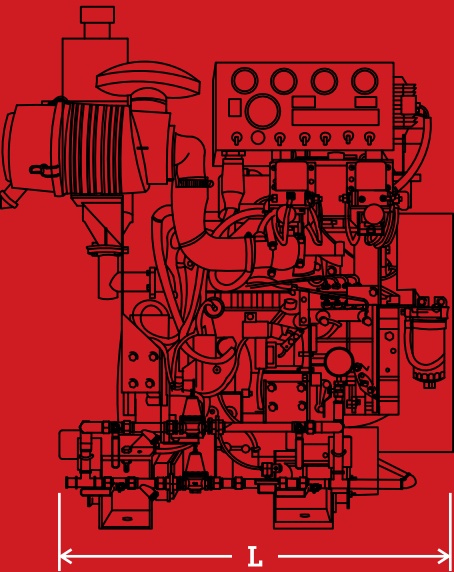
Engines are rated at standard SAE conditions of 29.61 in. (752.1 mm) Hg barometer and 77°F (25°C) inlet air temperature [approximates 300 ft (91.4 m) above sea level] by the testing laboratory (see SAE Standard J 1349).

A deduction of 3 percent from engine horsepower rating at standard SAE conditions shall be made for diesel engines for each 1000 ft. (305 m) altitude above 300 ft. (91.4 m)

A deduction of 1 percent from engine horsepower rating as corrected to standard SAE conditions shall be made for diesel engines for every 10°F (5.6°C) above 77°F (25°C) ambient temperature.



DIMENSIONAL DRAWINGS



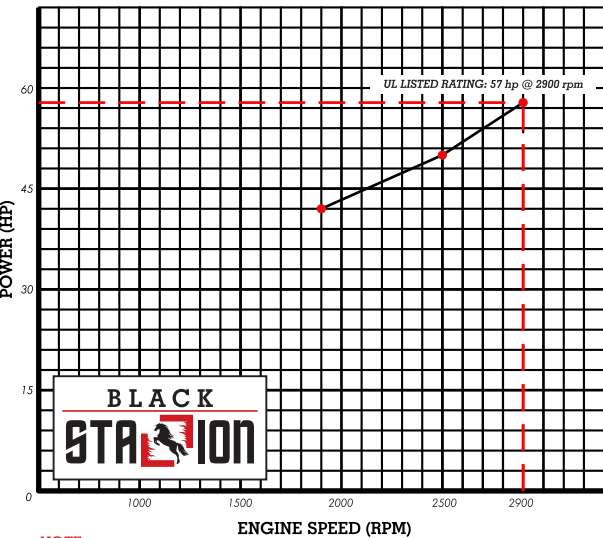
DIMENSIONS (L x B x H)

1070 mm x 1080 mm x 920 mm

WEIGHT:

385 kg (848.78 lbs)

PERFORMANCE CURVE



NOTE:

FOR USE IN FIRE PUMP APPLICATIONS ONLY.

FC 4085-UL

Heat Exchanger Cooled, Naturally Aspirated
3.26 Liter, 4 Cylinder Engine

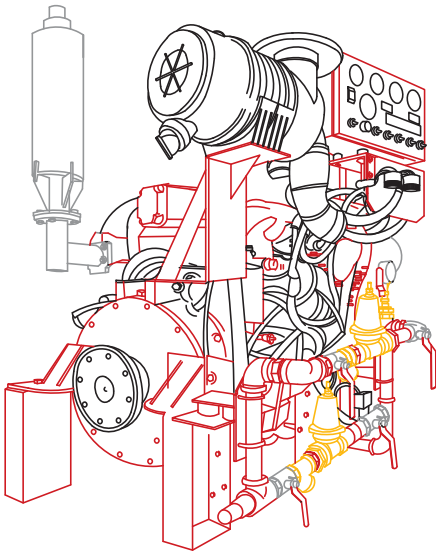
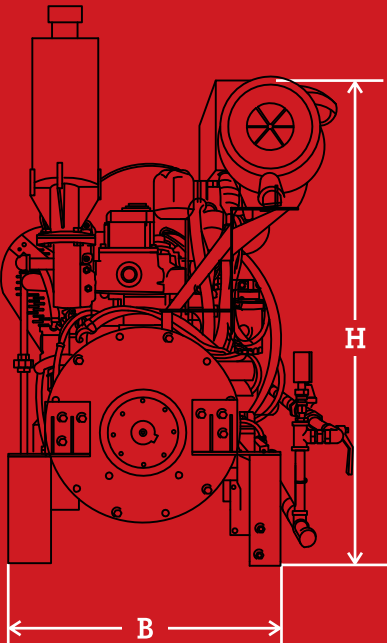
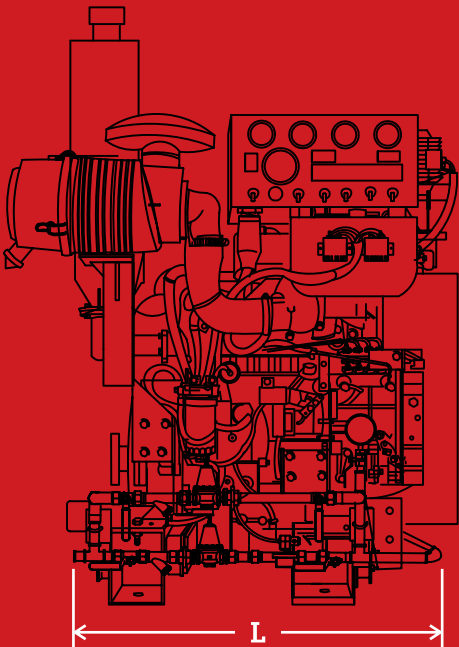
71 HP Diesel Engine

RATED POWER	71 HP
Speed	2900
Number of Cylinders	4
Aspiration	Naturally Aspirated
Rotation	Clockwise Rotation
Compression Ratio	17.5:1
Displacement	3268 cc
Engine Type	4 Stroke Cycle - Inline Construction
Bore & Stroke	102 mm X 100 mm
Fuel Consumption	16.6728 Kg./Hr
Voltage	12 VOLTS
Exhaust Temperature	550°C
Back Pressure	Not more than 15 Kpa
Raw Water Inlet Size	1 inch
Max. Raw Water Pressure	60 psi
Min. Raw Water Flow	19.0 gpm
Water Jacket Heater Size	1000 W, 240 VAC

- NOTES
- Each engine is factory tested to verify power and performance.
 - Engines are to be used for stationary emergency standby fire pump service only. Engines are to be tested in accordance with NFPA 25.
 - Engines are rated at standard SAE conditions of 29.61 in. (752.1 mm) Hg barometer and 77°F (25°C) inlet air temperature [approximates 300 ft (91.4 m) above sea level] by the testing laboratory (see SAE Standard J 1349).
 - A deduction of 3 percent from engine horsepower rating at standard SAE conditions shall be made for diesel engines for each 1000 ft. (305 m) altitude above 300 ft. (91.4 m)
 - A deduction of 1 percent from engine horsepower rating as corrected to standard SAE conditions shall be made for diesel engines for every 10°F (5.6°C) above 77°F (25°C) ambient temperature.



DIMENSIONAL DRAWINGS



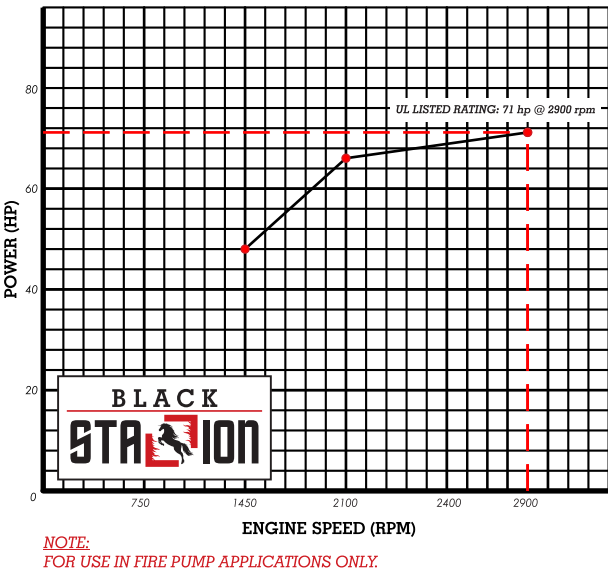
DIMENSIONS (L x B x H)

1120 mm x 920 mm x 1010 mm

WEIGHT:

530 kg (1168.45 lbs)

PERFORMANCE CURVE



FC 6130-UL

Heat Exchanger Cooled, Naturally Aspirated
7.12 Liter, 6 Cylinder Engine

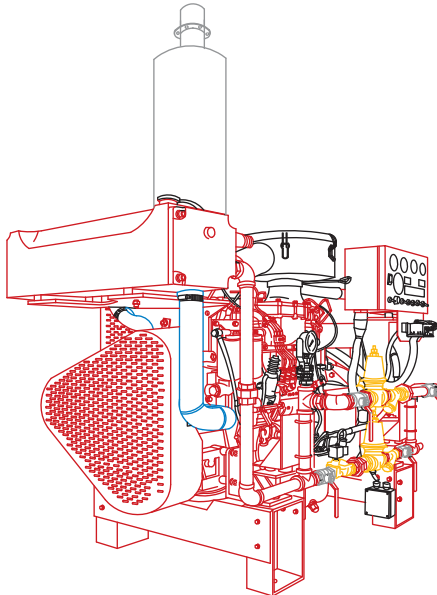
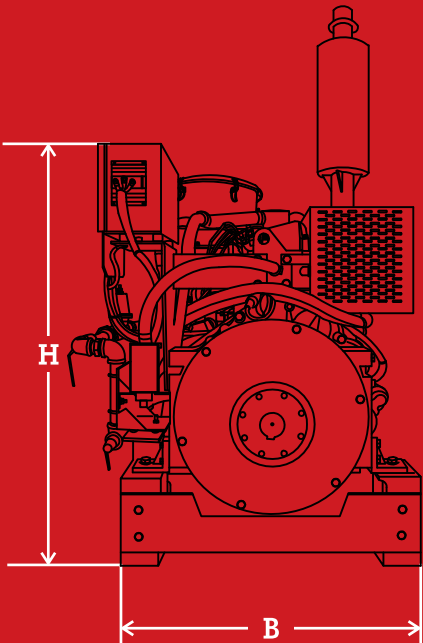
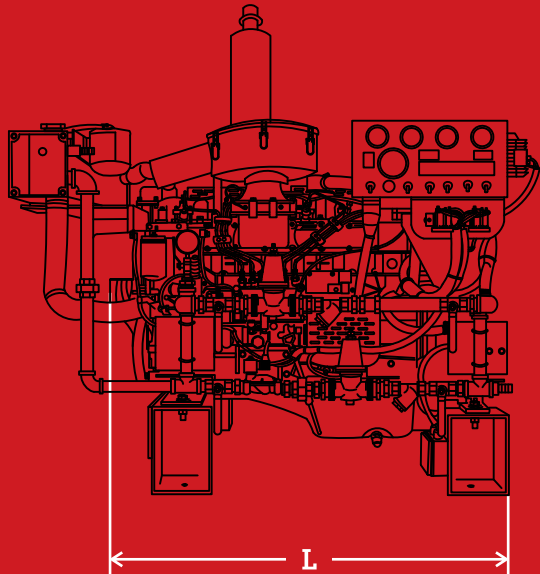
118 HP Diesel Engine

RATED POWER	118 HP
Speed	2900
Number of Cylinders	6
Aspiration	Naturally Aspirated
Rotation	Clockwise Rotation
Compression Ratio	17:1
Displacement	7127 cc
Engine Type	4 Stroke Cycle - Inline Construction
Bore & Stroke	110 mm X 125 mm
Fuel Consumption	25.5319 Kg./Hr
Voltage	24 VOLTS
Exhaust Temperature	650°C
Back Pressure	Not more than 15 Kpa
Raw Water Inlet Size	1 inch
Max. Raw Water Pressure	60 psi
Min. Raw Water Flow	25.0 gpm
Water Jacket Heater Size	2250 W, 240 VAC

- NOTES
- Each engine is factory tested to verify power and performance.
 - Engines are to be used for stationary emergency standby fire pump service only. Engines are to be tested in accordance with NFPA 25.
 - Engines are rated at standard SAE conditions of 29.61 in. (752.1 mm) Hg barometer and 77°F (25°C) inlet air temperature [approximates 300 ft (91.4 m) above sea level] by the testing laboratory (see SAE Standard J 1349).
 - A deduction of 3 percent from engine horsepower rating at standard SAE conditions shall be made for diesel engines for each 1000 ft. (305 m) altitude above 300 ft. (91.4 m)
 - A deduction of 1 percent from engine horsepower rating as corrected to standard SAE conditions shall be made for diesel engines for every 10°F (5.6°C) above 77°F (25°C) ambient temperature.



DIMENSIONAL DRAWINGS



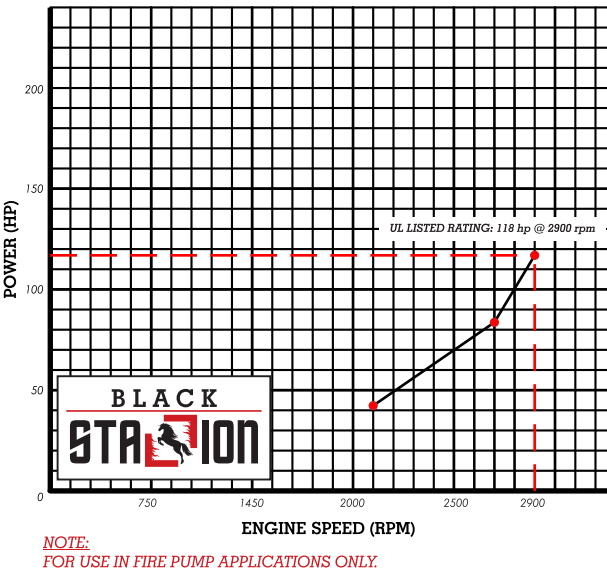
DIMENSIONS (L x B x H)

1510 mm x 900 mm x 1080 mm

WEIGHT:

810 kg (1785.74 lbs)

PERFORMANCE CURVE



FC 6150-UL

Heat Exchanger Cooled, Naturally Aspirated

7.52 Liter, 6 Cylinder Engine

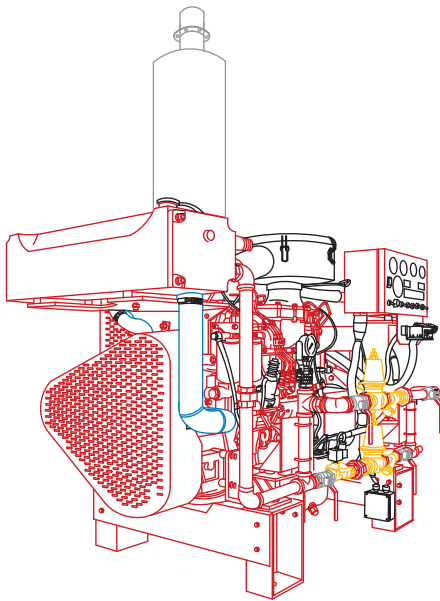
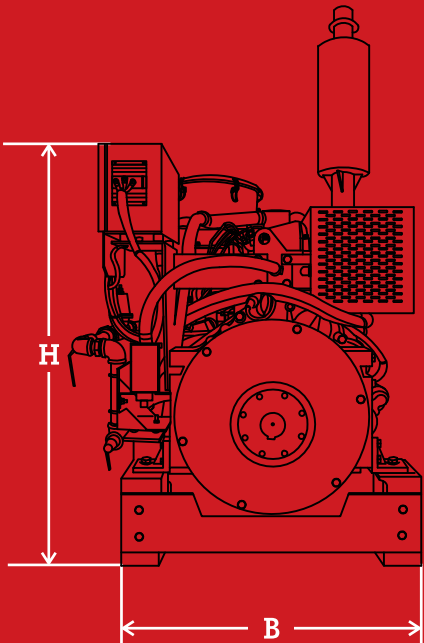
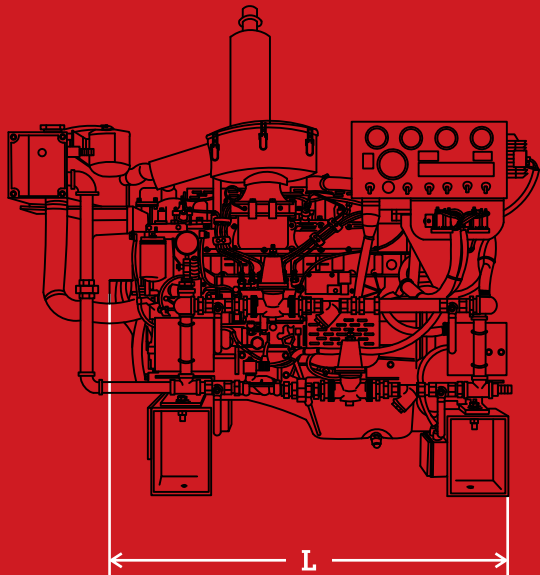
128 HP Diesel Engine

RATED POWER	128 HP
Speed	2900
Number of Cylinders	6
Aspiration	Naturally Aspirated
Rotation	Clockwise Rotation
Compression Ratio	17:1
Displacement	7521 cc
Engine Type	4 Stroke Cycle - Inline Construction
Bore & Stroke	113 mm X 125 mm
Fuel Consumption	32.7273 Kg./Hr
Voltage	24 VOLTS
Exhaust Temperature	650°C
Back Pressure	Not more than 15 Kpa
Raw Water Inlet Size	1 inch
Max. Raw Water Pressure	60 psi
Min. Raw Water Flow	25.0 gpm
Water Jacket Heater Size	2250 W, 240 VAC

- NOTES
- Each engine is factory tested to verify power and performance.
 - Engines are to be used for stationary emergency standby fire pump service only. Engines are to be tested in accordance with NFPA 25.
 - Engines are rated at standard SAE conditions of 29.61 in. (752.1 mm) Hg barometer and 77°F (25°C) inlet air temperature [approximates 300 ft (91.4 m) above sea level] by the testing laboratory (see SAE Standard J 1349).
 - A deduction of 3 percent from engine horsepower rating at standard SAE conditions shall be made for diesel engines for each 1000 ft. (305 m) altitude above 300 ft. (91.4 m)
 - A deduction of 1 percent from engine horsepower rating as corrected to standard SAE conditions shall be made for diesel engines for every 10°F (5.6°C) above 77°F (25°C) ambient temperature.



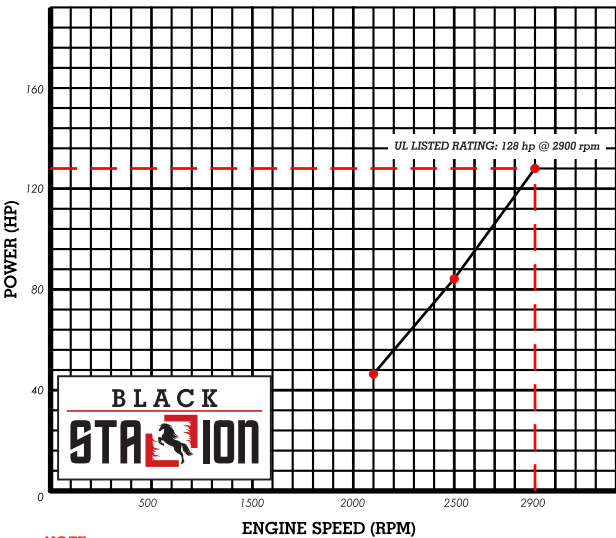
DIMENSIONAL DRAWINGS



DIMENSIONS (L x B x H)
1510 mm x 900 mm x 1080 mm

WEIGHT:
810 kg (1785.74 lbs)

PERFORMANCE CURVE



NOTE:
FOR USE IN FIRE PUMP APPLICATIONS ONLY.

FC 6195-UL

Heat Exchanger Cooled, Naturally Aspirated

8.48 Liter, 6 Cylinder Engine

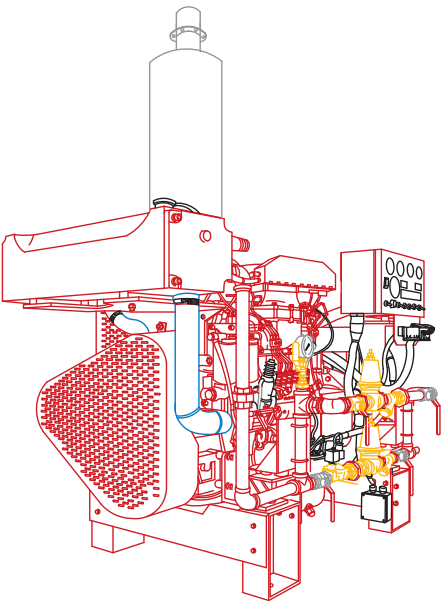
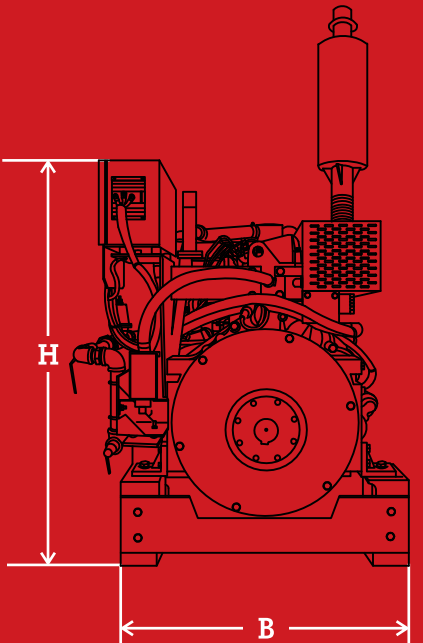
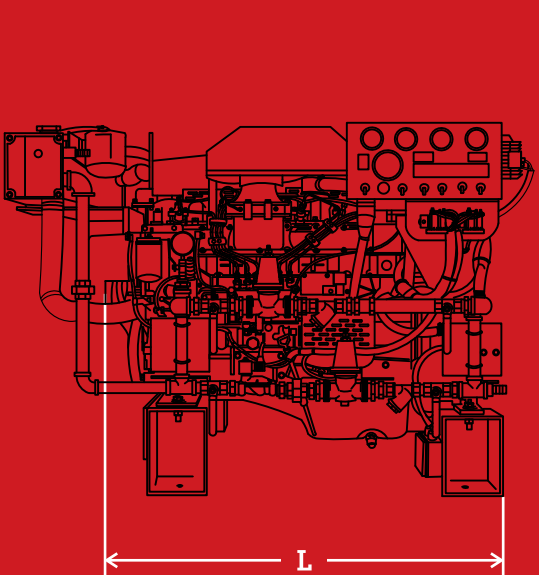
186 HP Diesel Engine

RATED POWER	186 HP
Speed	2900
Number of Cylinders	6
Aspiration	Turbocharged
Rotation	Clockwise Rotation
Compression Ratio	17.5:1
Displacement	8482 cc
Engine Type	4 Stroke Cycle - Inline Construction
Bore & Stroke	120 mm X 130 mm
Fuel Consumption	49.6552 Kg./Hr
Voltage	24 VOLTS
Exhaust Temperature	650°C
Back Pressure	Not more than 15 Kpa
Raw Water Inlet Size	1 inch
Max. Raw Water Pressure	60 psi
Min. Raw Water Flow	50.0 gpm
Water Jacket Heater Size	2250 W, 240 VAC

- NOTES
- Each engine is factory tested to verify power and performance.
 - Engines are to be used for stationary emergency standby fire pump service only. Engines are to be tested in accordance with NFPA 25.
 - Engines are rated at standard SAE conditions of 29.61 in. (752.1 mm) Hg barometer and 77°F (25°C) inlet air temperature [approximates 300 ft (91.4 m) above sea level] by the testing laboratory (see SAE Standard J 1349).
 - A deduction of 3 percent from engine horsepower rating at standard SAE conditions shall be made for diesel engines for each 1000 ft. (305 m) altitude above 300 ft. (91.4 m)
 - A deduction of 1 percent from engine horsepower rating as corrected to standard SAE conditions shall be made for diesel engines for every 10°F (5.6°C) above 77°F (25°C) ambient temperature.



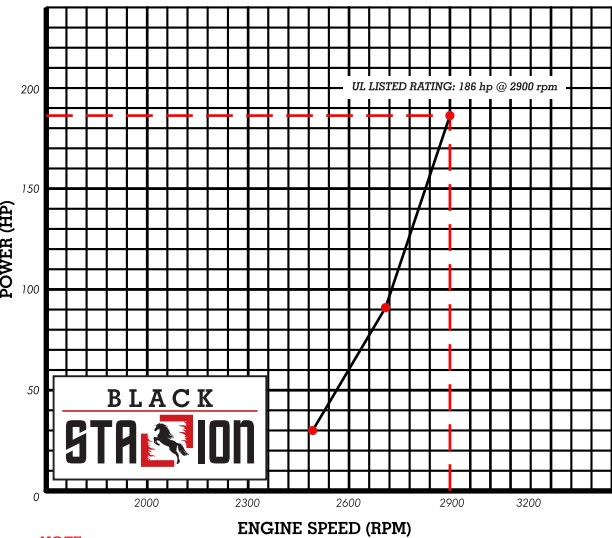
DIMENSIONAL DRAWINGS



DIMENSIONS (L x B x H)
1490 mm x 1000 mm x 1080 mm

WEIGHT:
895 kg (1973.14 lbs)

PERFORMANCE CURVE



NOTE:
FOR USE IN FIRE PUMP APPLICATIONS ONLY.

UL 1247 LISTED

NFPA 20 COMPLIANT

ENDURANCE TESTED

HOT START TESTED

COLD START TESTED

INNOVATIVE DESIGN

LATEST TECHNOLOGY

COMPETITIVE PRICING

WIDE RANGE FROM 15 HP

BLACK
STATION

INTERNAL COMBUSTION ENGINES FOR DRIVING STATIONARY FIRE PUMPS



Suitable For Major Spectrum Of Projects
Suitable And Compatible With Different Pump Configurations



PERFORMANCE ORIENTED

PREMIUM QUALITY

COMPACT ARRANGEMENT

COST EFFICIENT

LOW MAINTENANCE

EASY TO OPERATE

EFFICIENT FUEL CONSUMPTION

PROMPT SERVICE BACKUP

FAST & TIMELY DELIVERY